



## UNIVERSAL TEMPERATURE DIGITAL RECORDER

GEN3 SERIES UNIVERSAL TEMPERATURE  
DIGITAL RECORDER

# TRACKING TEMPERATURE

Whether you're protecting equipment integrity or working toward accreditation, the Jenkins Universal Temperature Digital Recorder can make the process seamless with intuitive design, backed by over 114 years of knowledge.

**JENKINS**

## TEMPERATURE MONITORING JUST GOT EASIER

Designed for scalability in mind, each recorder provides up to 8 channels of temperature data logging and can be accessed anywhere on your network.

With programmable alerts and real-time, touchscreen display, the Generation 3 Jenkins Universal Temperature Digital Recorder is the solution to your temperature data collection and monitoring needs.

### OPERATION

- Touchscreen interface
- Email alert set-up available
- Programmable limits alarms and faults are displayed
- Suitable for indoor or outdoor use
- 12 Dry contact relay alarm outputs are available for external signaling
  - Relays 1-8 correspond to thermocouple (TC) 1-8 and specify the lower and upper limits that apply to each relay.
  - Relays 9-10 trigger if any channel exceeds the specified value
- Factory configurable for various thermocouple types; Default configuration is for K-type thermocouples
- Designed for 120VAC, 60Hz, 1-phase input power; Other input voltages available upon request

**QUESTIONS ABOUT  
TEMPERATURE MONITORING?  
JUST ASK JENKINS.**

P: 800-438-3003 E: [ANSWERS@JENKINS.COM](mailto:ANSWERS@JENKINS.COM)  
[JENKINSELECTRIC.COM](http://JENKINSELECTRIC.COM) | [JENKINS.COM](http://JENKINS.COM)

# FEATURES

## DATA MANAGEMENT

- Provides up to 8 channels of temperature data logging
- Generates onscreen temperature vs. time graphs in real-time
- Generates and stores a report after each run cycle
- Independent data segregation

## CONNECTIVITY

- Data logging to a local database which can be mirrored to your own server or other storage location
- Onboard Wi-Fi and hardwired ethernet connectivity
- May be used as a standalone unit or in conjunction with the Jenkins Generation 3 Motor Test Systems

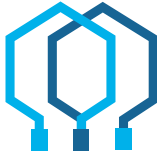
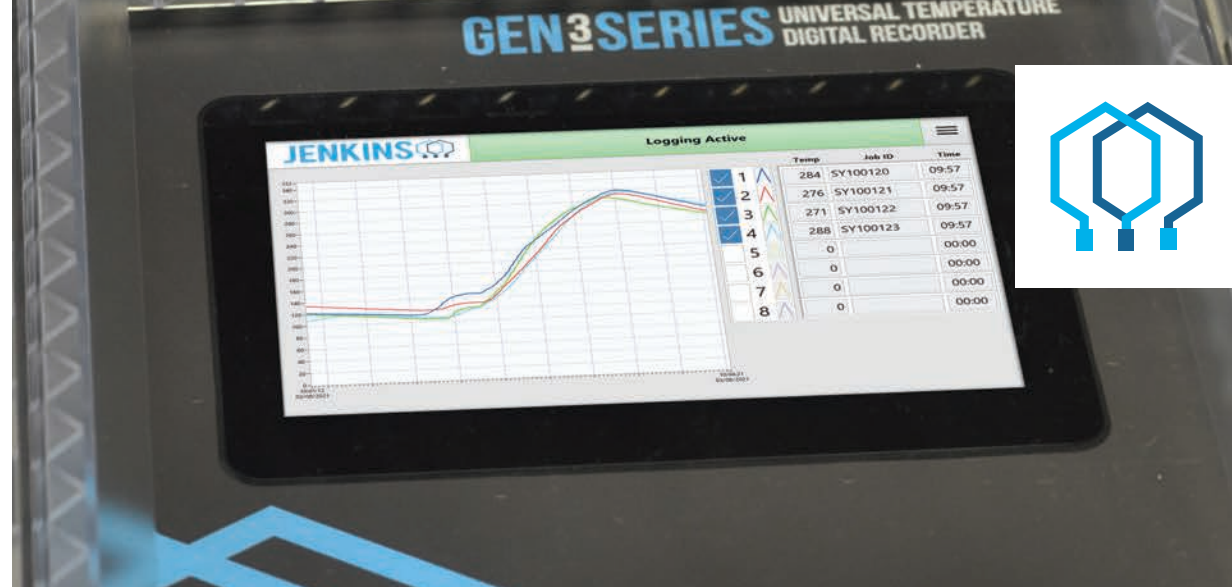
## SYSTEM NOTES

- System is designed for maximum ambient temperature of 35° C or 95° F; Customer must inform Jenkins Electric of ambient temperatures greater than this to determine if auxiliary cooling is required
- Thermocouples are purchased separately

## GEN3SERIES

Our Generation 3 Series product line utilizes the latest in industrial software technology. Built on the principles of safety, simple operation and dependable service, our systems reduce your team's exposure to danger, while keeping your data readily available.

- **UNIVERSAL TEMPERATURE DIGITAL RECORDER**
- **JENKINS MOTOR TEST SYSTEM**
- **TEMPERATURE & VIBRATION MODULE**
- **CORE LOSS TESTER**



## SPECIFICATIONS

### INPUT

Channel count	8 per module
Thermocouples	E, N, J, K, S, R, B, T, C
Relays	12 alarm relays

### CONNECTIVITY

Ethernet	10/100 Mbps
----------	-------------

### POWER REQUIREMENTS

AC: 120 Volts	300 Watts
60 Hz	

### PHYSICAL CHARACTERISTICS

Dimensions	19"W x 21"H x 12"D
Weight	29 lbs.

## SYSTEM HIGHLIGHTS

