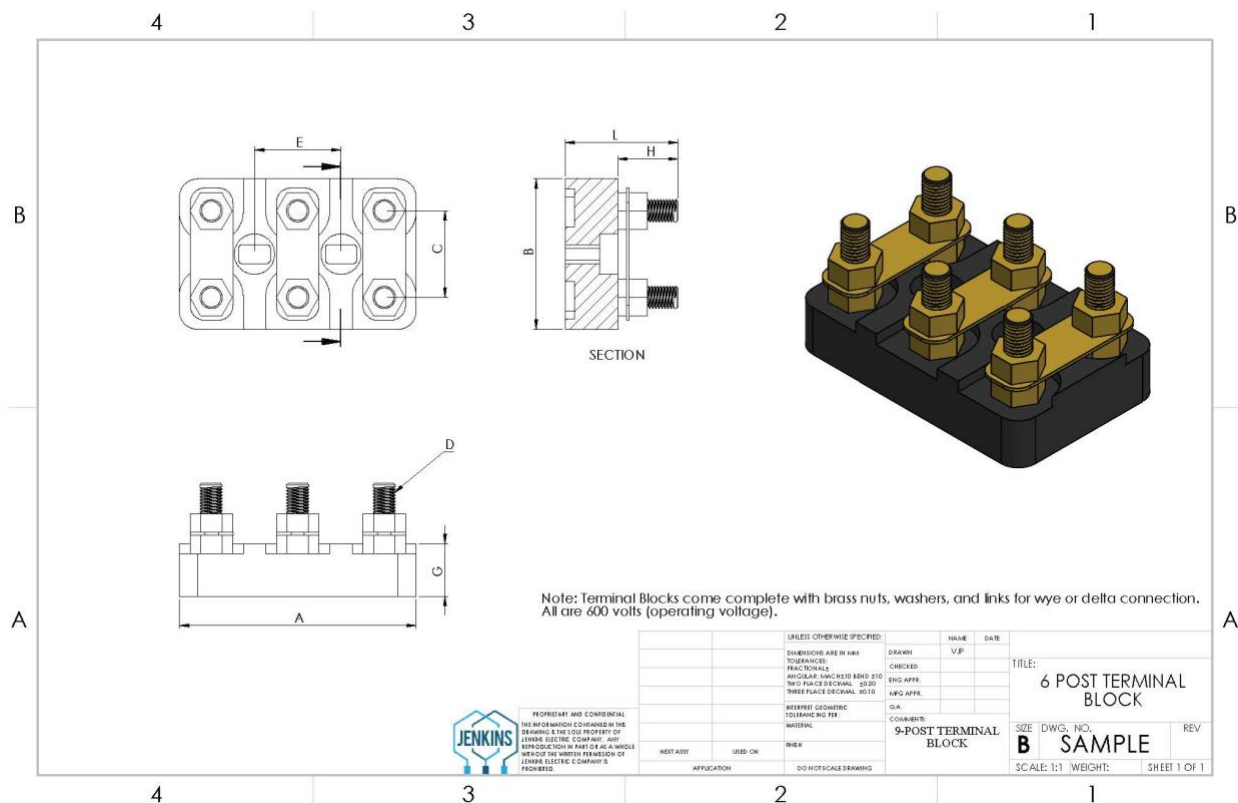




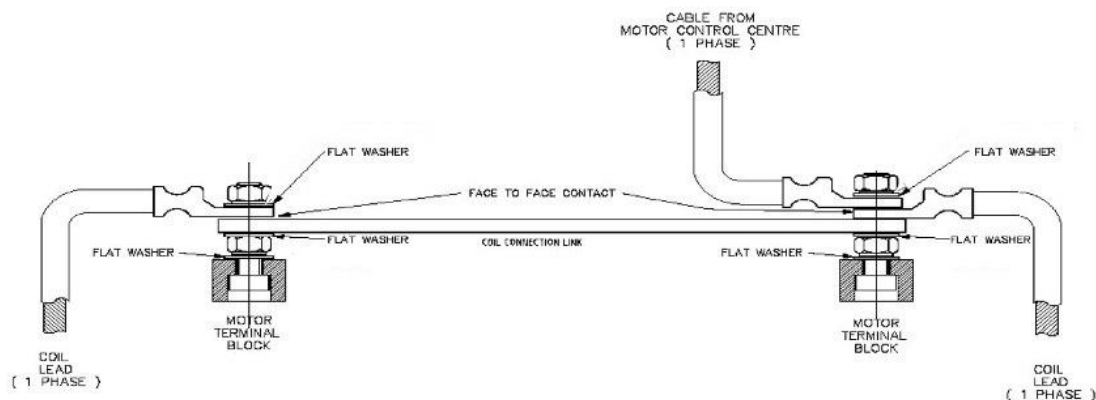
TERMINAL BLOCK INSTALLATION GUIDE

Thank you for purchasing terminal blocks from Jenkins.



INSTALLATION INSTRUCTIONS

1. Place the terminal block inside the terminal box and install two hold down screws (not included).
2. Remove one brass nut, washers, and links. (Make sure your bottom nuts are tight.)
3. If needed place the link, and then install your ring terminals over the post, then place the washer, and brass nuts on top.
4. Confirm that all nuts are tight.



Do not separate your link from your ring terminal with a brass nut or washer, this can create a high resistant joint which can cause motor failure.

TERMINAL BLOCK TORQUE REQUIREMENTS			
TERMINAL BLOCK STUD ANALYSIS		RECOMMENDED TIGHTENING	TORQUE
STUD SIZE	BAM/B	POUND-FEET	NEWTON-METERS
M4	3	1.3	1.8
M4	4	1.3	1.8
M4	94	1.3	1.8
M5	5	1.6	2.2
M5	6	7.3	9.9
M5	96	7.3	9.9
M8	7	8.9	12
M8	8	8.9	12
M10	10	16	21
M12	12	33	38
M14	14	46	62
M16	16	76	93
M20	20	143	180

When connecting wires to motor terminal blocks, ensure the bottom nut is snug to the base. Tighten top nut to torque requirements above.

JUST ASK JENKINS

Shop our variety of terminal boxes and other motor parts and replacement fans at Jenkins.com. Of course, if you have questions about this installation or any of our products and services, you can always, Just Ask Jenkins by emailing answers@jenkins.com or calling our Customer Service at (800) 438-3003.