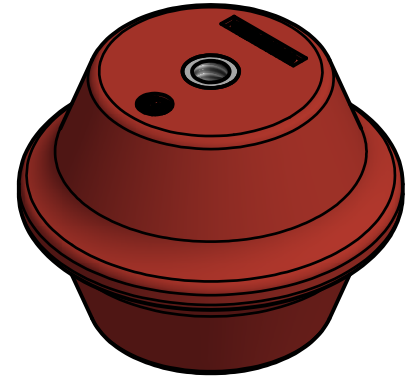
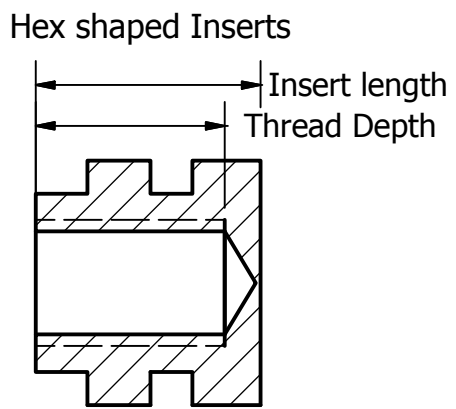
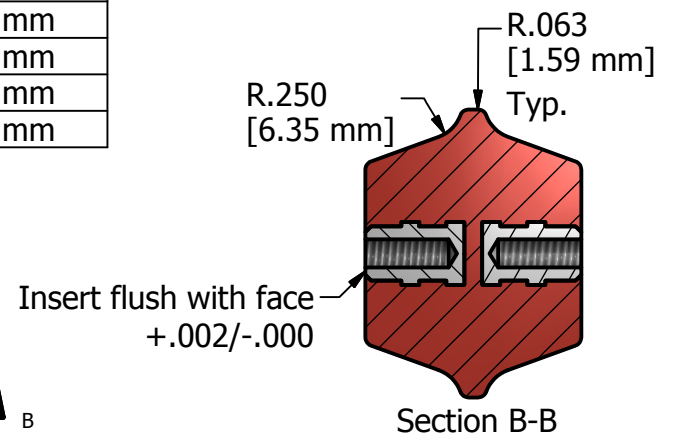
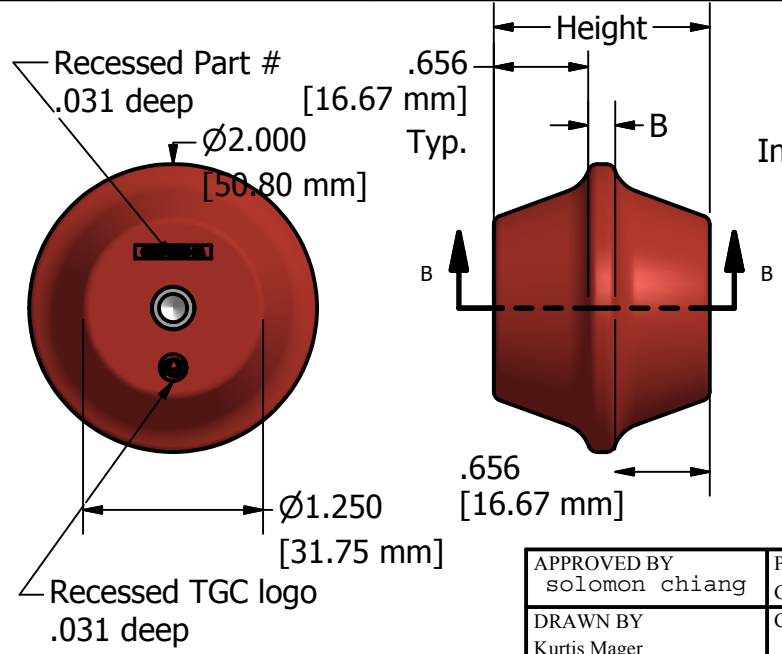



2015 Series					
Part #	Height	B	Thread Size	Thd Depth in dec.	Insert Length
GINS-2015-1A	1.500"	.188"	1/4-20x1/2" deep	.512"	.630"
GINS-2015-2A	1.500"	.188"	5/16-18x1/2" deep	.512"	.630"
GINS-2015-3A	1.500"	.188"	3/8-16x1/2" deep	.472"	.590"
GINS-2015-2B	1.750"	.438"	5/16-18x1/2" deep	.512"	.630"
GINS-2015-3B	1.750"	.438"	3/8-16x9/16" deep	.563"	.669"
GINS-2015-2C	2.000"	.688"	5/16-18x11/16" deep	.669"	.787"
GINS-2015-3C	2.000"	.688"	3/8-16x11/16" deep	.669"	.787"
GINS-2015-4C	2.000"	.688"	1/2-13x11/16" deep	.669"	.787"
GINS-2015-3D	2.250"	.938"	3/8-16x11/16" deep	.669"	.787"
GINS-2015-4D	2.250"	.938"	1/2-13x3/4" deep	.748"	.866"
GINS-2015-M1A	38.1mm	4.8 mm	M6-1 x 13 deep		16 mm
GINS-2015-M2A	38.1mm	4.8 mm	M8-1.25 x 13 deep		16 mm
GINS-2015-M3A	38.1mm	4.8 mm	M10-1.5 x 12 deep		15 mm
GINS-2015-M2B	44.5mm	11.1 mm	M8-1.25 x 13 deep		16 mm
GINS-2015-M3B	44.5mm	11.1 mm	M10-1.5 x 14.3 deep		17 mm
GINS-2015-M2C	50.8mm	17.5 mm	M8-1.25 x 17 deep		20 mm
GINS-2015-M3C	50.8mm	17.5 mm	M10-1.5 x 17 deep		20 mm
GINS-2015-M4C	50.8mm	17.5 mm	M12-1.75 x 17 deep		20 mm
GINS-2015-M3D	57.2mm	23.8 mm	M10-1.5 x 17 deep		20 mm
GINS-2015-M4D	57.2mm	23.8 mm	M12-1.75 x 19 deep		22 mm



Inserts	
Part#	Material
As shown	Aluminum
Followed by -B	Brass
Followed by -S	Steel



General Tolerances (in)			
Linear	Inj. moulding	Comp. Moulding	Metal
.236" to 1.181"	±.019"	±.019"	±.008"
1.181" to 4.724"	±.031"	±.039"	±.011"
4.724" to 15.748"	±.047"	±.059"	±.019"
15.748" to 39.37"	±.078"	±.098"	±.031"

APPROVED BY solomon chiang	PART NAME GINS-2015 Stand Off Series	MATERIAL approved UL891 Glass Polyester BMC (File #E354884)	 2121 WALTON ROAD ST LOUIS MO 63114 USA (314)-423-5200 FAX (314)-423-9009
DRAWN BY Kurtis Mager	CUSTOMER CONTACT	Notes:	
DRAWING DATE 6/7/17 Rev1	FACILITY	Dimensions in [] are in mm	